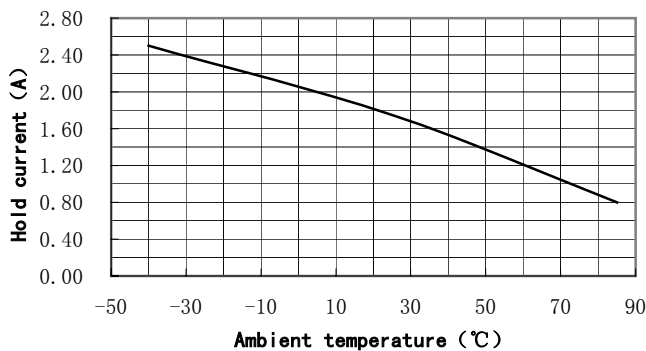


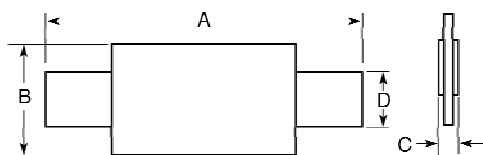
Electrical Characteristics:

Max. Operating Current	100 A _{DC}	Max. Operating Voltage	15 V _{DC}
Hold Current at 25°C	1.75 A	Trip Current at 25°C	3.8 A
Initial Resistance	50~90 mΩ	Max. Post Trip Resistance	120 mΩ

Thermal Derating Curves:



Physical Description for Dimensions:



- A: 23.1mm/0.909in. (Max.)
- B: 5.2mm/0.205in. (Max.)
- C: 1.0mm/0.039in. (Max.)
- D: 4.0mm/0.157in. (Typ.)

Terminal Material: 0.125mm/0.0049in. nominal thickness; quarter-hard nickel.

Insulating material: Polyester tape.

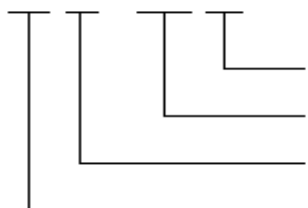
Test Conditions and Accept/Reject Criteria:

Test	Test Conditions	Accept/Reject Criteria
Initial Resistance	In still air at 25°C	50~90 Milliohms
Hold Current	60min. at hold current at 25°C	No trip
Time to Trip	8.75A, 15V at 25°C	≤ 5.0 Seconds
Trip Cycle Life	100A, 15V, 100Cycles	No arcing or burning
Trip Endurance	100A, 15V, 24hr	No arcing or burning

Storage Temperature: -40°C to 85°C

Part numbering system:

KT 15-1750 D



- Axial Leaded
- Hold Current: 1.75 Amps
- Max. Operating Voltage: 15 Volts
- Keter Products

Agency Recognition: UL, TUV 