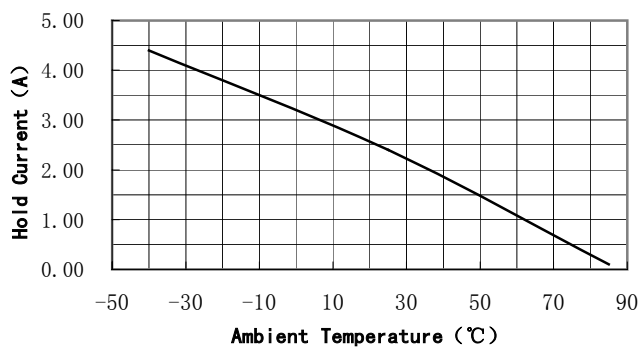


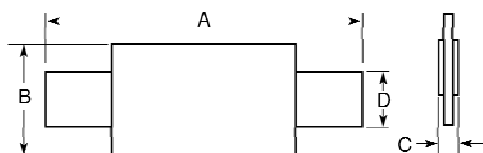
**Electrical Characteristics:**

Max. Operating Current	100 A <sub>DC</sub>	Max. Operating Voltage	16 V <sub>DC</sub>
Hold Current at 25°C	2.4 A	Trip Current at 25°C	5.9 A
Initial Resistance	14~26 mΩ	Max. Post Trip Resistance	52 mΩ

**Thermal Derating Curves:**



**Physical Description for Dimensions:**



- A: 26.2mm/1.031in. (Max.)
- B: 5.3mm/0.209in. (Max.)
- C: 0.8mm/0.031in. (Max.)
- D: 4.0mm/0.157in. (Typ.)

**Terminal Material:** 0.125mm/0.0049in. nominal thickness; quarter-hard nickel.

**Insulating material:** Polyester tape.

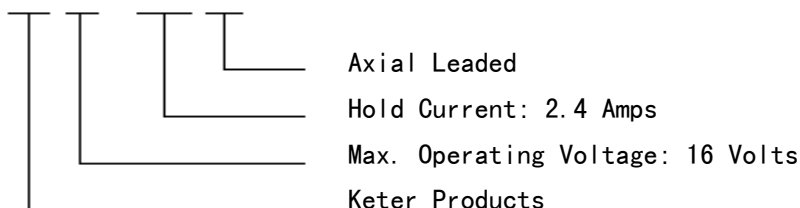
**Test Conditions and Accept/Reject Criteria:**

Test	Test Conditions	Accept/Reject Criteria
Initial Resistance	In still air at 25°C	14~26 Milliohms
Hold Current	60min. at hold current at 25°C	No trip
Time to Trip	12A, 16V at 25°C	≤ 5.0 Seconds
Trip Cycle Life	100A, 16V, 100Cycles	No arcing or burning
Trip Endurance	100A, 16V, 24hr	No arcing or burning

**Storage Temperature:** -40°C to 70°C

**Part numbering system:**

KT 16-2400 DL



Agency Recognition: UL, TUV 